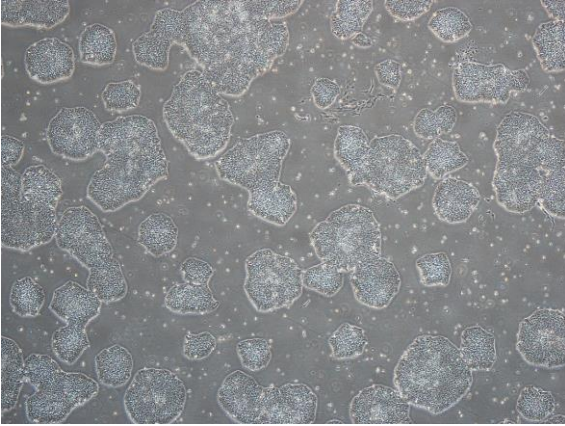
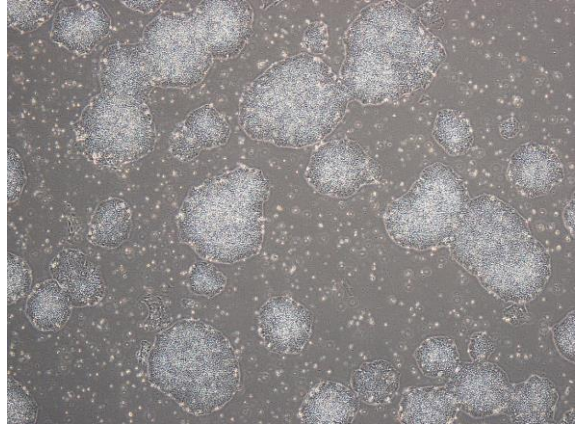


## 【 CiRA-j-1095 】 Morphology of iPSC colonies

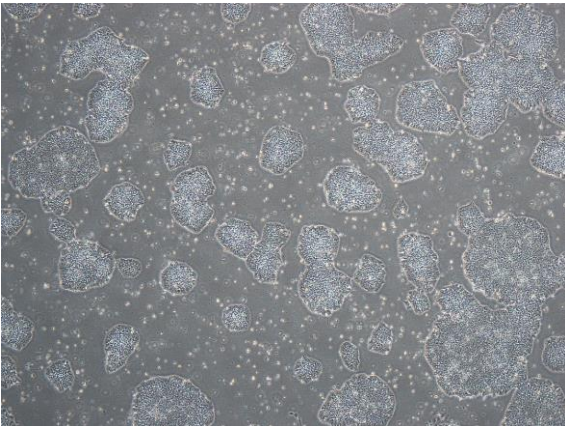
CiRA-j-1095-A: passage-2



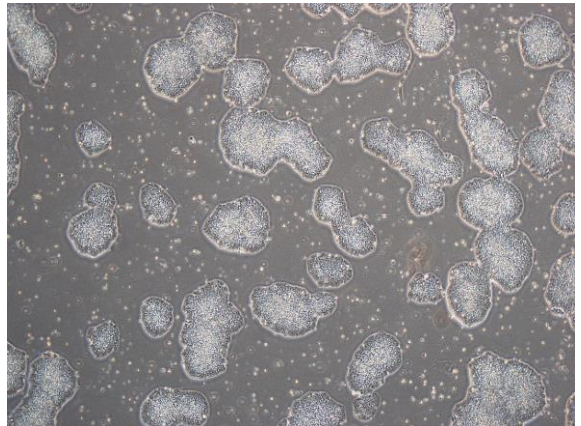
CiRA-j-1095-B: passage-2



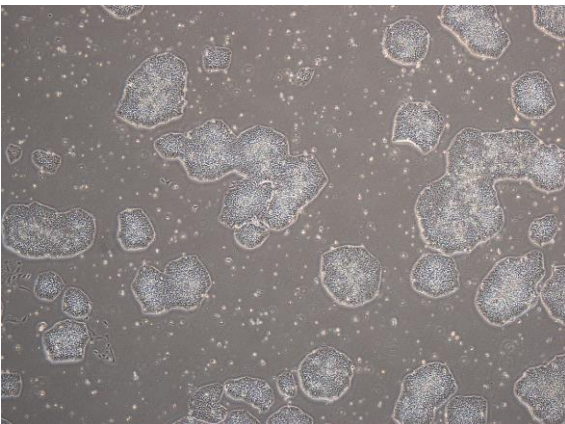
CiRA-j-1095-C: passage-2



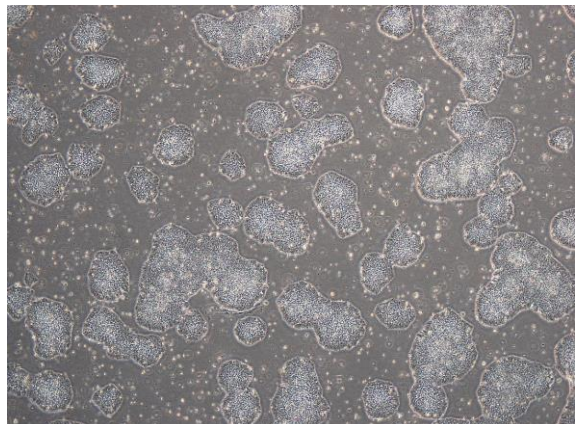
CiRA-j-1095-D: passage-2



CiRA-j-1095-E: passage-2



CiRA-j-1095-F: passage-2



( All images were captured at 4x magnification )